



# Tessuti

## Fabrics

Tessuto **n.13** | 94% PL + 6% CO

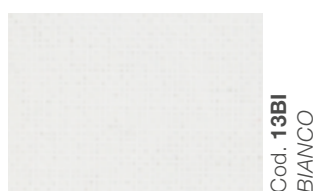
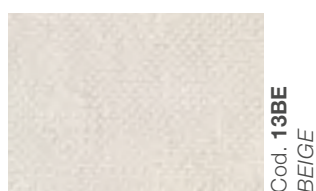
Cat. C

**IDROPELLENTE**  
water-repellent

**ANTIMACCHIA**  
Stain repellent

**ANTIMICROBICO**  
anti-microbial  
**ANTIBATTERICO**  
anti-bacterial

**ANTIACARO**  
anti-mite



Tessuto **n.14** | 100% PL

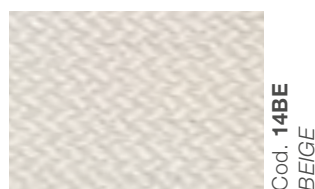
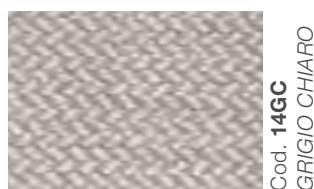
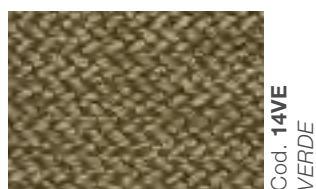
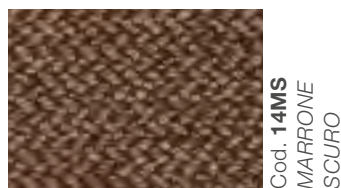
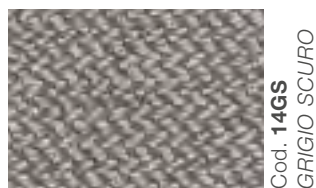
Cat. C

**IDROPELLENTE**  
water-repellent

**ANTIMACCHIA**  
Stain repellent

**ANTIMICROBICO**  
anti-microbial  
**ANTIBATTERICO**  
anti-bacterial

**ANTIACARO**  
anti-mite



Tessuto **n.16** | 100% PL

Cat. C

**IDROPELLENTE**  
water-repellent

**ANTIMACCHIA**  
Stain repellent

**ANTIMICROBICO**  
anti-microbial  
**ANTIBATTERICO**  
anti-bacterial

**ANTIACARO**  
anti-mite



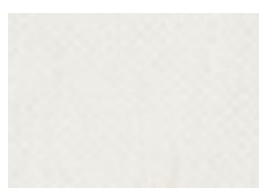
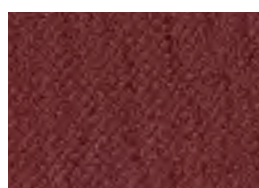
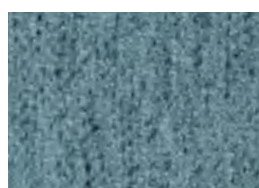
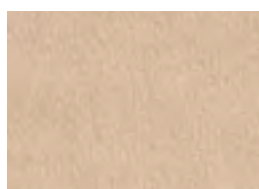
Tessuto **n.17** | 100% PL

Cat. C

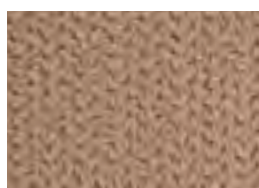
 **IDROPELLENTE**  
water-repellent

 **ANTIMACCHIA**  
Stain repellent

 **ANTIMICROBICO**  
anti-microbial  
**ANTIBATTERICO**  
anti-bacterial

 **ANTIACARO**  
anti-mite
Cod. **17BI**  
BIANCOCod. **17EC**  
ÉCRUCod. **17TO**  
TORTORACod. **17MS**  
MARRONE  
SCUROCod. **17BO**  
BORDEAUXCod. **17AZ**  
AZZURROCod. **17GS**  
GRIGIO SCUROCod. **17BL**  
BLUTessuto **n.19** | 100% PLKTL - Telo copripoltrona universale / *Armchair cover sheet*LAVARE A MANO A 30° - STIRARE - PULIRE A SECCO  
NON CANDEGGIARE - NON ASCIUGARE IN ASCIUGATRICEHand wash at 30° - Ironing - Dry-cleaning  
Don't bleach - Don't dry in the dryerCod. **19GS**  
GRIGIO SCUROCod. **19MS**  
MARRONE  
SCUROCod. **19RO**  
ROSSOCod. **19BL**  
BLUCod. **19EC**  
ÉCRUTessuto **n.22** | 94% PL + 6% PA

Cat. A

 **IDROPELLENTE**  
water-repellent
Cod. **22NE**  
NEROCod. **22BE**  
BEIGECod. **22TO**  
TORTORACod. **22MS**  
MARRONE  
SCUROCod. **22RO**  
ROSSOCod. **22AZ**  
AZZURROCod. **22GC**  
GRIGIO CHIAROCod. **22EC**  
ÉCRU



# Tessuti

## Fabrics

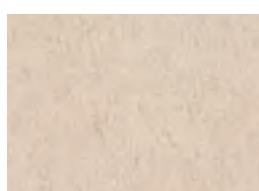
Tessuto **n.24** | 50% PL + 50% PU

Cat. C

**IDROPELLENTE**  
water-repellent



Cod. **24NE**  
NERO



Cod. **24BE**  
BEIGE



Cod. **24TO**  
TORTORA



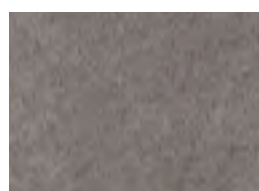
Cod. **24MS**  
MARRONE  
SCURO



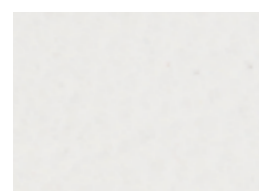
Cod. **24BO**  
BORDEAUX



Cod. **24BL**  
BLU



Cod. **24GS**  
GRIGIO SCURO



Cod. **24BI**  
BIANCO

Tessuto **n.25** | 90% PVC + 10% PA

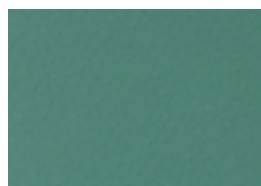
Cat. C

**IDROPELLENTE**  
water-repellent

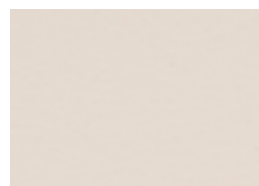
**ECOPELLE IGNIFUGA**  
flame retardant

**ANTIMICROBICO**  
anti-microbial  
**ANTIBATTERICO**  
anti-bacterial

**ANTIACARO**  
anti-mite



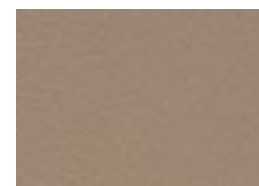
Cod. **25VE**  
VERDE



Cod. **25BE**  
BEIGE



Cod. **25BO**  
BORDEAUX



Cod. **25TO**  
TORTORA



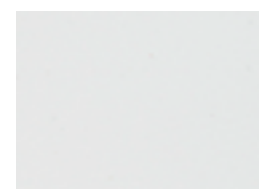
Cod. **25MS**  
MARRONE  
SCURO



Cod. **25BL**  
BLU



Cod. **25BI**  
BIANCO

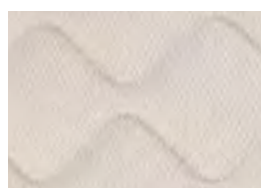


Cod. **25GC**  
GRIGIO  
CHIARO

Tessuto **n.26** | 94% PL + 6% PA

Trapuntato - Cat. C

**IDROPELLENTE**  
water-repellent



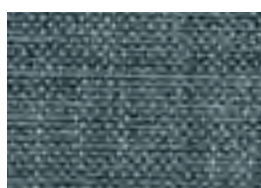
Cod. **26BE**  
BEIGE



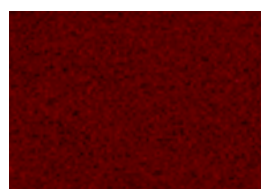
Cod. **26RO**  
ROSSO

Tessuto **n.28** | 100% PL

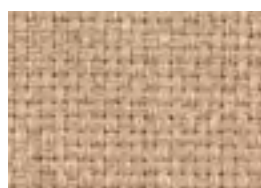
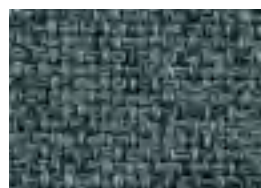
Cat. A

 **IDROPELLENTE**  
water-repellent
Cod. **28TO**  
TORTORACod. **28EC**  
ÉCRUCod. **28MS**  
MARRONE  
SCUROCod. **28RO**  
ROSSOCod. **28BO**  
BORDEAUXCod. **28AZ**  
AZZURROCod. **28BL**  
BLUCod. **28GS**  
GRIGIO SCUROTessuto **n.29** | 100% PL

Cat. A

 **IDROPELLENTE**  
water-repellent
Cod. **29VE**  
VERDECod. **29EC**  
ÉCRUCod. **29MC**  
MARRONE  
CHIAROCod. **29MS**  
MARRONE  
SCUROCod. **29GI**  
GIALLOCod. **29RO**  
ROSSOCod. **29BO**  
BORDEAUXCod. **29AZ**  
AZZURROTessuto **n.30** | 100% PL

Cat. B

 **IDROPELLENTE**  
water-repellent
Cod. **30GS**  
GRIGIO SCUROCod. **30BE**  
BEIGECod. **30EC**  
ÉCRUCod. **30MC**  
MARRONE  
CHIAROCod. **30SE**  
SENAPECod. **30RO**  
ROSSOCod. **30AZ**  
AZZURROCod. **30BL**  
BLU



# Tessuti

## Fabrics

Tessuto **n.31** | 100% PL

Cat. C

**IDROPELLENTE**  
water-repellent

**ANTIMACCHIA**  
Stain repellent

**WATER CLEAN TREATMENT**



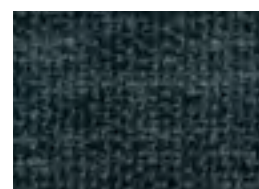
Cod. **31MC**  
MARRONE  
CHIARO



Cod. **31EC**  
ÉCRU



Cod. **31TO**  
TORTORA



Cod. **31BL**  
BLU



Cod. **31VE**  
VERDE



Cod. **31SE**  
SENAPE



Cod. **31BO**  
BORDEAUX



Cod. **31GC**  
GRIGIO CHIARO

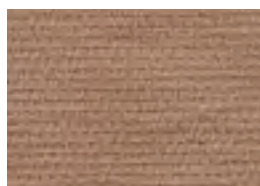
Tessuto **n.32** | 88% PL + 12% NY

Cat. C

**IDROPELLENTE**  
water-repellent

**ANTIMACCHIA**  
Stain repellent

**WATER CLEAN TREATMENT**



Cod. **32EC**  
ÉCRU



Cod. **32MC**  
MARRONE  
CHIARO



Cod. **32TO**  
TORTORA



Cod. **32BO**  
BORDEAUX



Cod. **32RO**  
ROSSO



Cod. **32AR**  
ARANCIO



Cod. **32VE**  
VERDE



Cod. **32BL**  
BLU

Tessuto **n.33** | 100% PL

Cat. C

**ANTIMACCHIA**  
Stain repellent

**WATER CLEAN TREATMENT**



Cod. **33TO**  
TORTORA



Cod. **33GI**  
GIALLO



Cod. **33AR**  
ARANCIO



Cod. **33RO**  
ROSSO



Cod. **33BO**  
BORDEAUX



Cod. **33VE**  
VERDE



Cod. **33AZ**  
AZZURRO

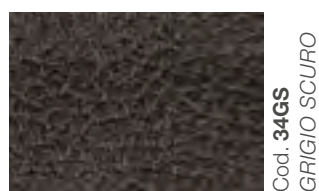


Cod. **33BL**  
BLU

Tessuto **n.34** | 100% PL

Cat. C

 **IDROPELLENTE**  
water-repellent

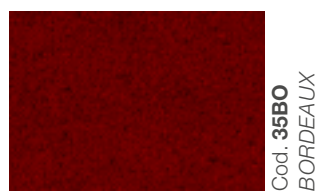


Tessuto **n.35** | 100% PL

Cat. C

 **IDROPELLENTE**  
water-repellent

 **ANTIMACCHIA**  
Stain repellent



Tessuto **n.36** | 100% PL

Cat. A

 **IDROPELLENTE**  
water-repellent

